

BE INSPIRED  
LOOK BOOK

*Abstraction*



ROSENSTIELS  
LONDON — 1880

BE INSPIRED  
LOOK BOOK

# Abstraction

*Introducing Abstraction, an exploration of texture, pattern and composition. A deep dive into the mind of abstract artists and a journey of colour, style and mood.*

*Our latest look book shares enduring trends from the world of abstract art, including traditional and iconic names such as Paul Klee and Sophie Taeuber-Arp to intriguing and unique pieces by a variety of contemporary artists. Either way, we aim to encourage expressive and eclectic art that stands out and instantly infuses vibrancy, personality and happiness into interiors.*

*Our first rule of abstract art: do not follow the crowd. Find a piece that calls to you. Rosenstiels have carefully curated a collection that celebrates individuality. By including a wide ranging colour palette we have opened up the ability to choose art that will complement any current decor and style. From contrasting block colours and neutral, softer shades to paintings injected with colour, to long-lasting black, white and greys.*

*Choosing abstract art is all about finding something that feels personal - do not be afraid of mixing and matching colour and style. That is the wonder of abstract art - it can be both independent or displayed alongside contemporary and classic art.*

*Now is the time for bold. For imposing and empowering statement pieces and art that truly sings to you. Now is the time for Abstraction.*

ROSENSTIELS

LONDON — 1880



*Please click  
on images to  
link to our website  
for further  
information*



*Further inspiration*

33-35 Markham Street, Chelsea, London, SW3 3NR, England

+44 (0)20 7352 3551 [sales@rosenstiels.com](mailto:sales@rosenstiels.com) [www.rosenstiels.com](http://www.rosenstiels.com)

© Felix Rosenstiel's Widow & Son Ltd.



An abstract painting by Arshile Gorky, featuring a complex composition of layered colors and expressive brushstrokes. The palette is dominated by various shades of blue, ranging from deep cerulean to light sky blue, interspersed with warm tones of ochre, yellow, and pink. A prominent white, calligraphic line forms a large, irregular shape on the left side. The overall texture is rich and painterly, with visible brushwork and some darker, more saturated areas in the upper right and lower center. The text is overlaid in the center, and the artist's signature is visible in the lower center.

*“Abstraction allows man to see  
with his mind what he cannot see  
physically with his eyes”*

Arshile Gorky





**GCL: RW71995** (Ratio 2:1)



### *Valentina Kvesic*

"For me, the painting process is an ongoing adventure, like a game without any limits or predictable outcome."

Valentina Kvesic devotes herself to painting with a keen sense for dramaturgy and colour composition, and just as much serenity: she plays with shapes, techniques and colours and experiments by using different materials. In a good interplay of intuition and thoughtfulness she produces surprising results.

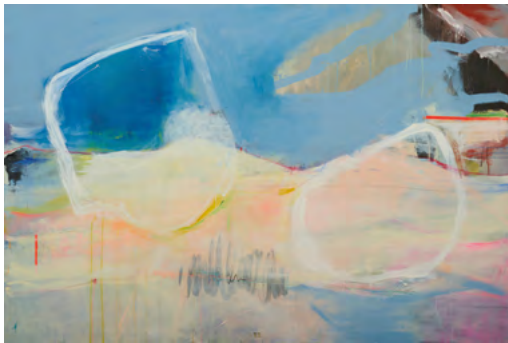
She has a passion for colours in all variations and nuances, and draws great inspiration from it. Her artwork takes the observer on their own adventure, stimulates their own imagination and gives plenty of room for individual interpretations. Her work has been showcased in over 45 solo as well as collective exhibitions.

Valentina Kvesic was born in Split in 1979 and grew up in Croatia and Germany.





**GCL: RX86852** (Ratio 2:3)



**GCL: RX86851** (Ratio 3:2)



**GCL: RH3519** (Ratio 4:5)







**GCL: RL25759** (Ratio 1:1)



**GCL: RH3517** (Ratio 4:5)



**GCL: RH3520** (Ratio 4:5)





**GCL: RL25760** (Ratio 1:1)



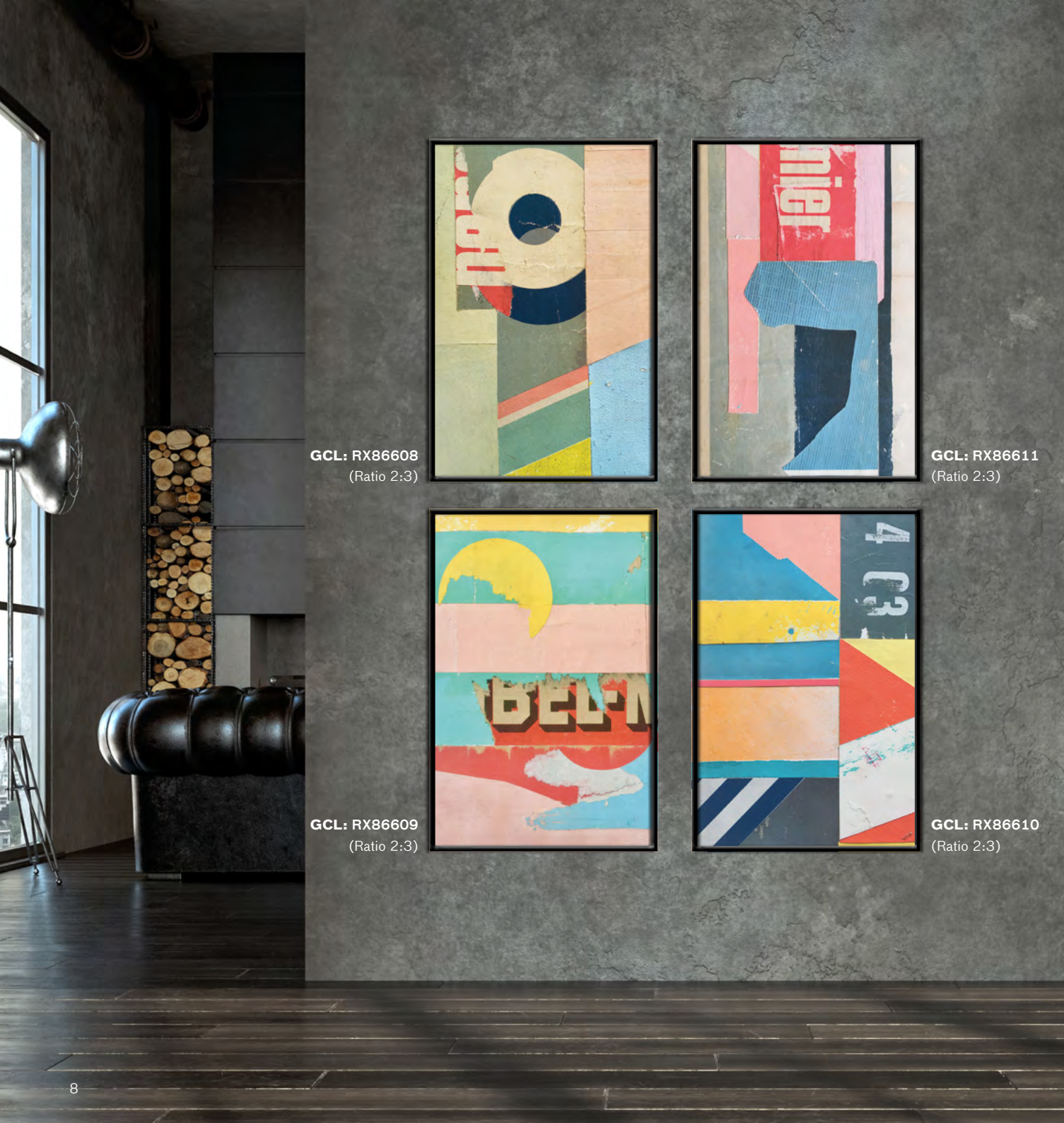
**GCL: RL25366** (Ratio 1:1)



**GCL: RH3518** (Ratio 4:5)







**GCL: RX86608**  
(Ratio 2:3)



**GCL: RX86611**  
(Ratio 2:3)



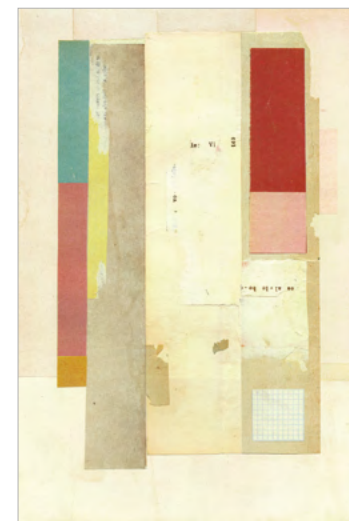
**GCL: RX86609**  
(Ratio 2:3)



**GCL: RX86610**  
(Ratio 2:3)



**OE: DXN10705**  
(Paper Size 12 x 18 in | 30 x 45 cm)

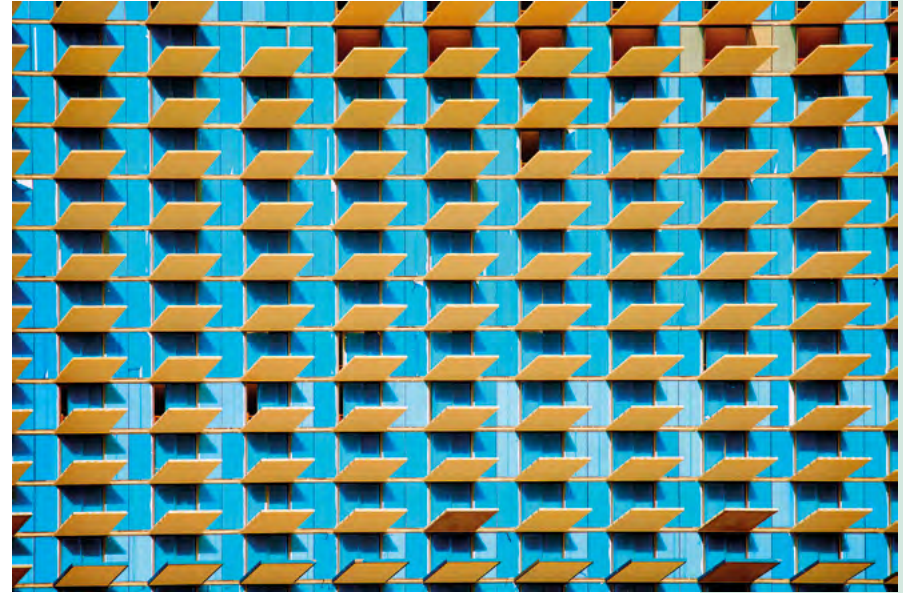


**OE: DXN10706**  
(Paper Size 12 x 18 in | 30 x 45 cm)





**GCL: RX87370** (Ratio 3:2)



**GCL: RX87371** (Ratio 3:2)

*“Colour possesses me. I don’t have to pursue it.  
It will possess me always, I know it.  
That is the meaning of this happy hour:  
Colour and I are one. I am a painter”*

Paul Klee





**GCL: RW71966** (Ratio 2:1)



### *Jeannette Hayes*

Currently the President of the Pastel Society of Great Britain, Jeannette, whose view of the world was no doubt affected by losing and later regaining her hearing as a child, has worked as an artist since graduating in Fine Art/ Painting from Kingston University in 1985.

For many years her work was representational & figurative, but the lure of the abstract grew ever stronger after a trip to Morocco in 2002, where the bright sunshine and vivid colours of North Africa inspired her to embrace a much more vivid palette in her work.

Jeannette enjoys the physicality of working with any medium, but the immediacy of layering, smudging and moving pure pigment and soft pastels is a constant source of particular joy. Her award-winning work has been exhibited extensively both throughout the U.K. and abroad.





**GCL: RT46790** (Ratio 4:3)



**GCL: RX86663** (Ratio 3:2)



**GCL: RL25560** (Ratio 1:1)



**GCL: RL25562** (Ratio 1:1)



**GCL: RL25561** (Ratio 1:1)





**GCL: RT46465** (Ratio 4:3)



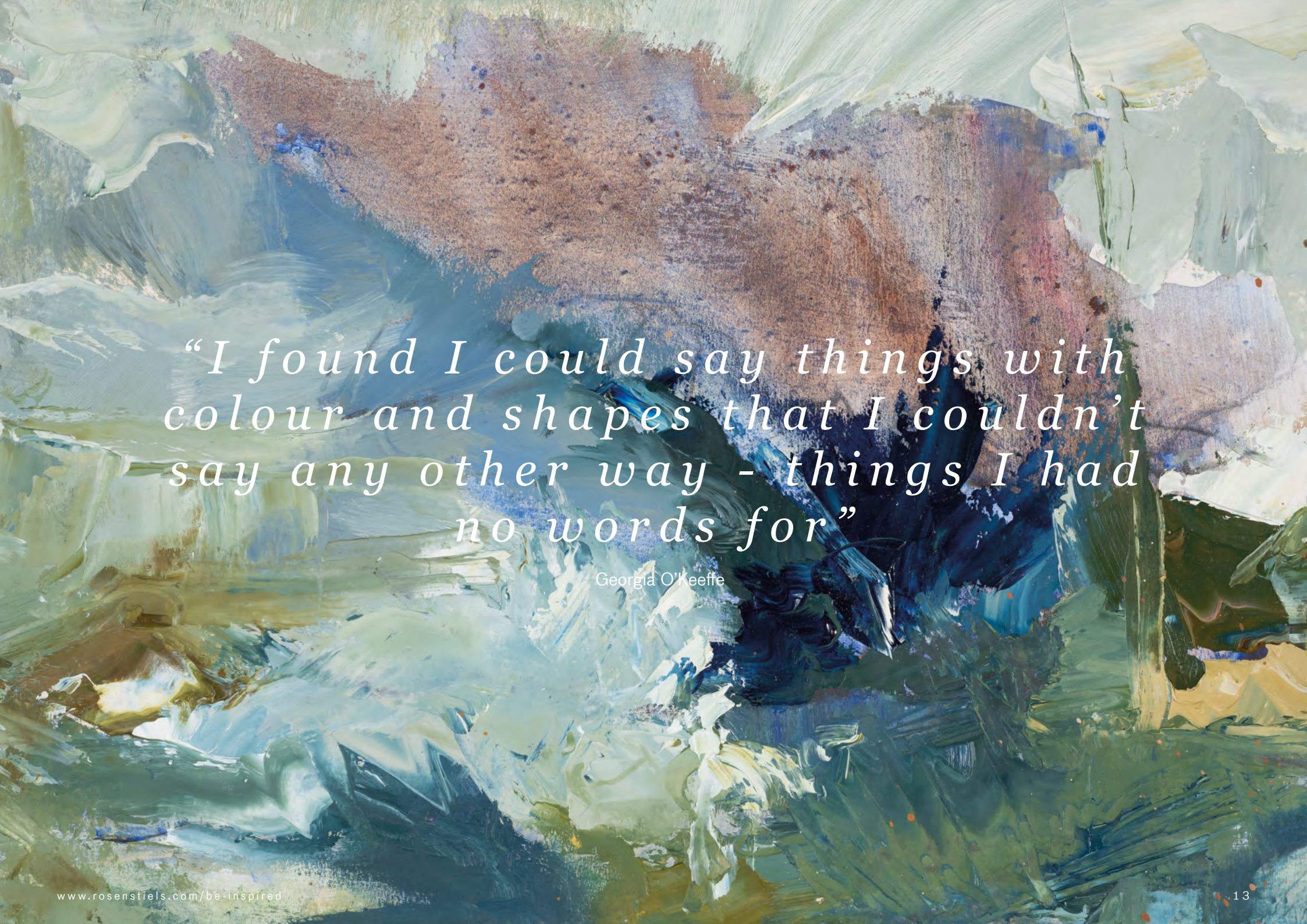
**GCL: RT46466** (Ratio 4:3)



**GCL: RT46467** (Ratio 4:3)





An abstract painting by Georgia O'Keeffe, featuring thick, expressive brushstrokes in shades of blue, green, and brown. The composition is layered, with a dark, textured brown area at the top, a deep blue area in the middle, and a lighter, more vibrant green and blue area at the bottom. The overall effect is one of organic, flowing forms and rich, earthy colors.

*“I found I could say things with  
colour and shapes that I couldn’t  
say any other way - things I had  
no words for”*

Georgia O'Keeffe





**GCL: RT46992**  
(Ratio 3:4)



### *Tuema Pattie*

Tuema Pattie was born in Dublin and studied at the Belfast College of Art, the Central School of Art and Design and Morley College, London, Piers Ottey and Christopher Baker in Sussex and Robin Child in Devon.

Tuema has exhibited at the Royal Academy Summer Exhibition; the Royal Hibernian Summer Exhibition; the Cork Street Gallery; Art for Youth at the Mall Gallery London; London Art Fair; the Chichester Open; the Moncrief Bray Gallery, the Kevis House Gallery and the Rowntree Tryon Gallery all in Petworth; APPART; the East Hampshire Art Fair; the Jorgensen Gallery in Dublin and at Glyndebourne.

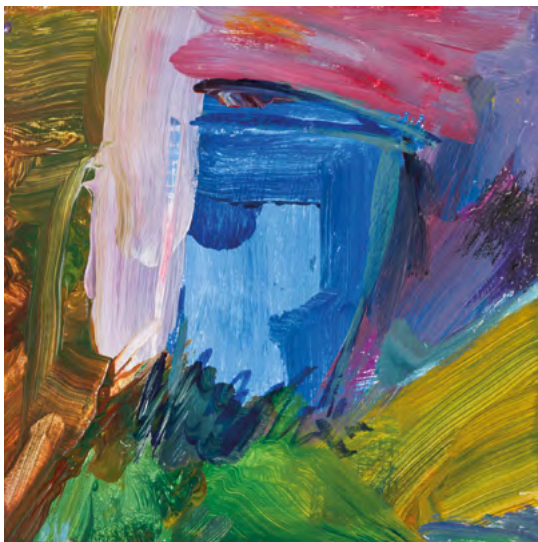
In her days in Belfast and London, she took advantage of urban scenes as her subject matter. She then had a long period in which she took time out to have two children and to support her husband in his career. This meant it was difficult to find the time for her beloved painting, as was the case for many women in that era.

With the move out of London in 1989, she did have the subsequent benefit of much foreign travel. Subject matter was carefully gathered with the resultant explosion of energy into her canvases, with paintings from the Galapagos, Antarctica, Spain, Italy and Uzbekistan as well as her beautiful West Sussex. It is from this period that she was able to develop into the world of experimental landscapes.





**GCL: RL25755** (Ratio 1:1)



**GCL: RL25575** (Ratio 1:1)



**GCL: RX86664** (Ratio 3:2)





**GCL: RT46793** (Ratio 4:3)



**GCL: RT46991** (Ratio 4:3)

*“To me, painting has always been an opportunity to interpret imaginatively what I see in front of me. The facts are there – it is how one brings them to life that is the magic”.*

Tuema Pattie





**GCL: RX86809** (Ratio 2:3)



**GCL: RX86811** (Ratio 3:2)



*Please click  
on images to  
link to our website  
for further  
information*



**GCL: RX86665** (Ratio 3:2)







**GCL: RX86808** (Ratio 3:2)



**GCL: RT46990** (Ratio 4:3)

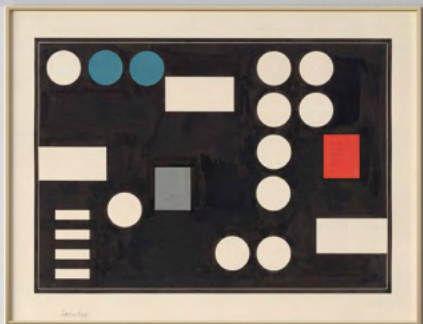


**GCL: RT46993** (Ratio 4:3)

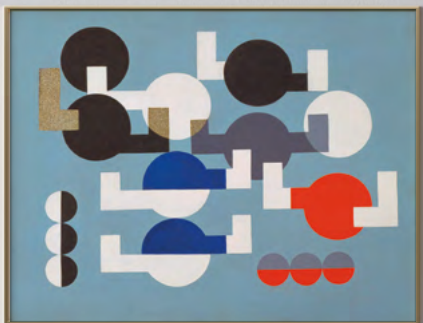


**GCL: RX86810** (Ratio 3:2)

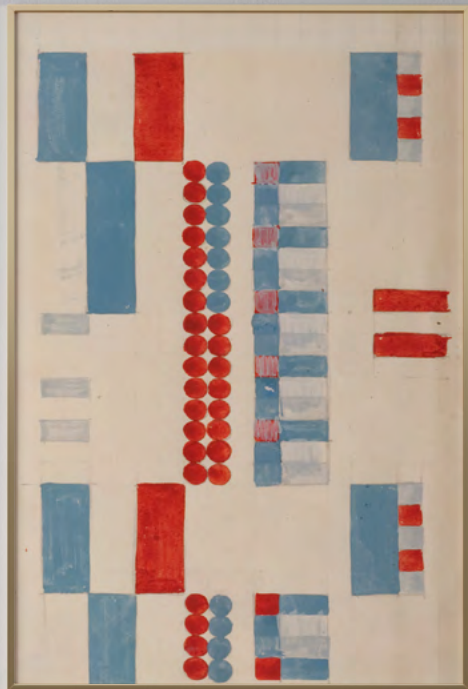




**GCL: RT46685** (Ratio 4:3)



**GCL: RT46686** (Ratio 4:3)



**GCL: RX86620** (Ratio 2:3)



## *Sophie Taeuber-Arp*

Sophie Taeuber-Arp, born in Switzerland in 1889, studied both in Switzerland and in Germany.

She studied art and dance and is today regarded as one of the most important artists of geometric abstraction in the 20th Century.

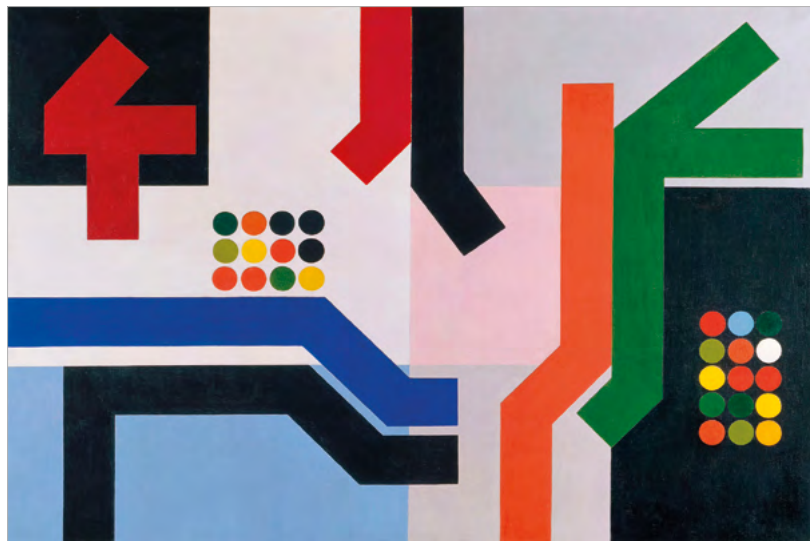
In 1915 she met the Dada artist, Jean Arp, with whom she was to collaborate on numerous projects until her death in 1943. She married Jean Arp in 1922 and during the early period of her marriage, she taught weaving and textile arts at the Zurich School of Arts and Crafts.

Contemporary with Mondrian and Malevich, her geometric abstractions reflect a subtle understanding of the interplay between colour and form.

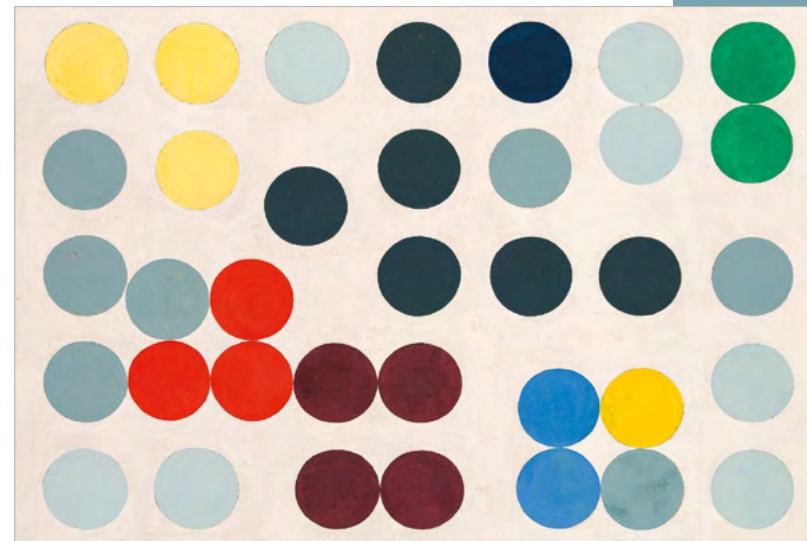
Sophie and her husband moved to Strasbourg and became French citizens in 1926 and, thereafter, Sophie received numerous commissions for interior design projects.

At the start of the Second World War she and her husband fled Paris and moved to Grasse in Southern France, where they created an art colony which included Sonia Delaunay. Tragically, she died of accidental carbon monoxide poisoning during a visit to Switzerland in 1943 due to a malfunctioning stove.

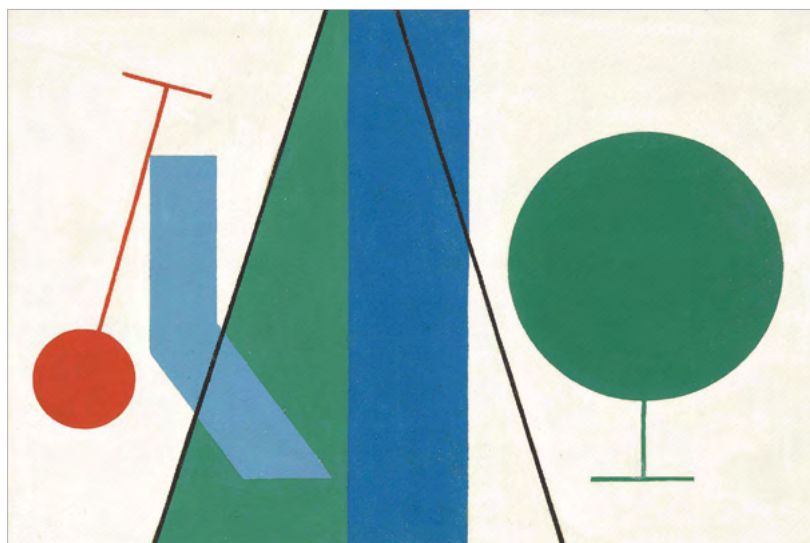




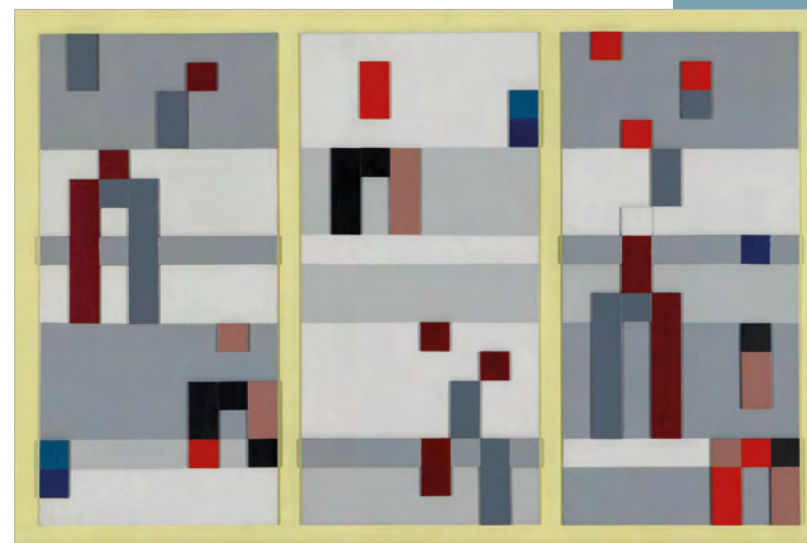
**GCL: RX86618** (Ratio 3:2)



**GCL: RX86619** (Ratio 3:2)

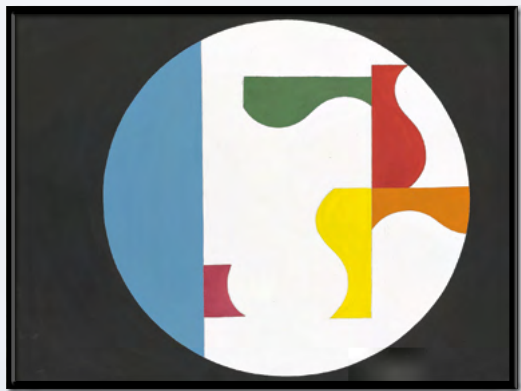


**GCL: RX86617** (Ratio 3:2)



**GCL: RX86621** (Ratio 3:2)





**GCL: RT46683** (Ratio 4:3)



**GCL: RT46684** (Ratio 3:4)





**GCL: RT43460** (Ratio 3:4)



**GCL: RT43461** (Ratio 3:4)



**GCL: RT43459** (Ratio 3:4)







**FAE: GM1635**

(Paper Size 30 x 40 in | 76 x 102 cm)

**GCL: RN0170** (Ratio 2:3)



**FAE: GM1639**

(Paper Size 30 x 40 in | 76 x 102 cm)

**GCL: RN0166** (Ratio 2:3)



**FAE: GM1636**

(Paper Size 30 x 40 in | 76 x 102 cm)

**GCL: RN0171** (Ratio 2:3)



*Please click  
on images to  
link to our website  
for further  
information*





**FAE: GM1637**  
(Paper Size 40 x 30 in | 102 x 76 cm)  
**GCL: RN0168** (Ratio 3:2)



**FAE: GM1638**  
(Paper Size 40 x 30 in | 102 x 76 cm)  
**GCL: RN0169** (Ratio 3:2)

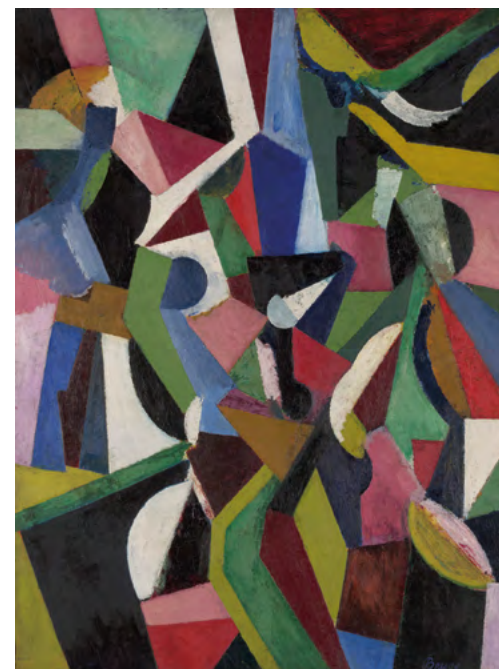
*“A line is a dot that went  
for a walk”*

Paul Klee

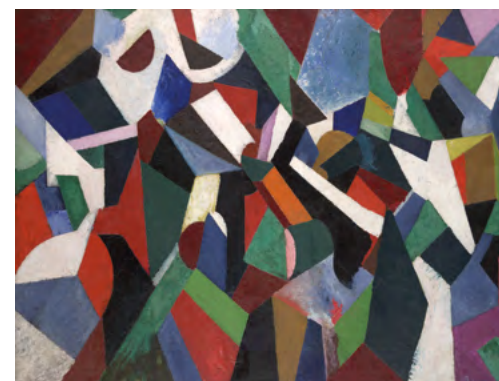




**OE: DXB10800**  
(Paper Size 18 x 18 in | 45 x 45 cm)



**OE: DXS10798**  
(Paper Size 12 x 16 in | 30 x 40 cm)



**OE: DXS10799**  
(Paper Size 16 x 12 in | 40 x 30 cm)



Please click  
on images to  
link to our website  
for further  
information

**OE: DXS10801**

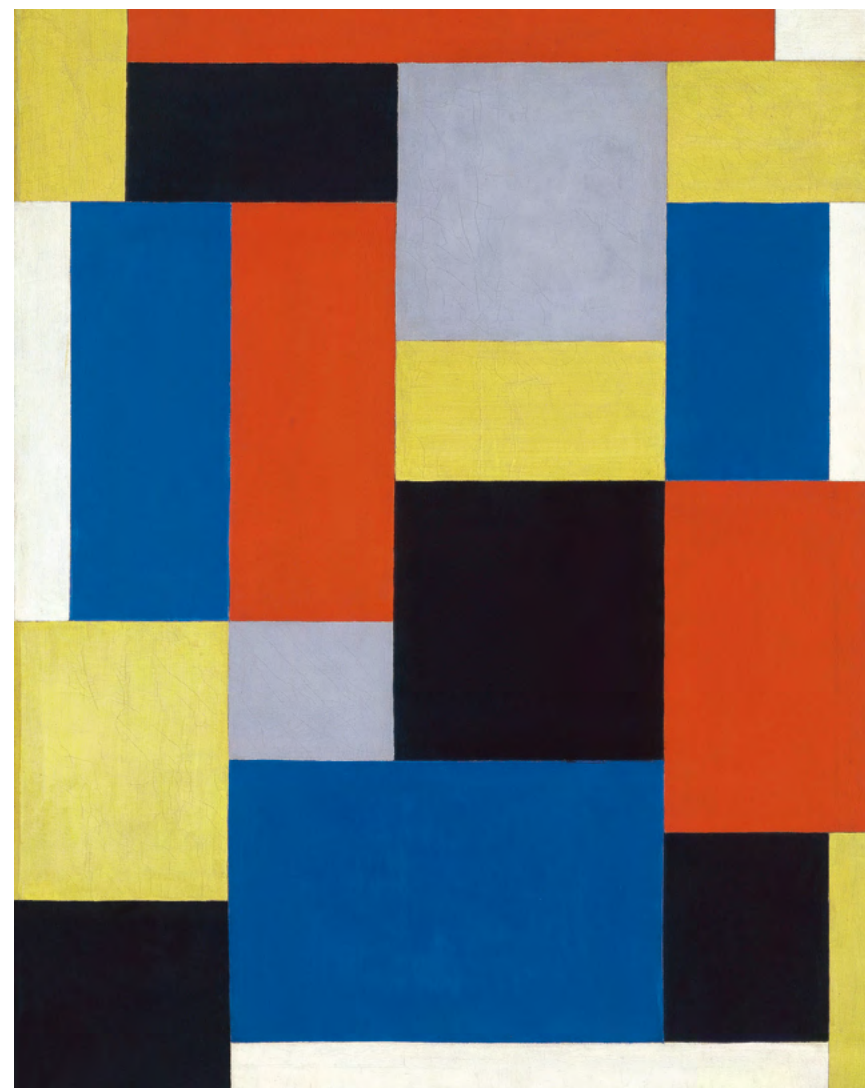
(Paper Size 12 x 16 in | 30 x 40 cm)







**GCL: RL23625** (Ratio 1:1)



**FAE: GM3722**

(Paper Size 18 x 24 in | 46 x 60 cm)

(Image Size 14 x 20 in | 35 x 50 cm)

**GCL: RH2690** (Ratio 4:5)





**FAE: GM3150**

(Paper Size 22 x 32 in | 56 x 81 cm)

(Image Size 18 x 28 in | 46 x 71 cm)

**GCL: RW71821** (Ratio 1:2)



**GCL: RX85421** (Ratio 3:2)





**FAE: GL489**

(Paper Size 32 x 32 in | 80 x 80 cm)

(Image Size 30 x 27 in | 76 x 68 cm)



**FAE: GL490**

(Paper Size 32 x 32 in | 80 x 80 cm)

(Image Size 30 x 27 in | 76 x 68 cm)





## Holly Freen

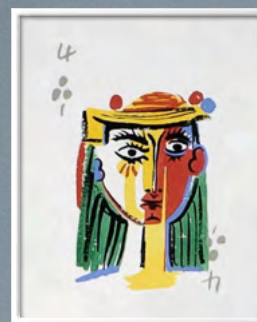
Holly Freen is an award-winning artist whose work incorporates a range of mediums from oil painting to original prints.

Holly has developed a unique and technically accomplished style which appeals to a wide range of art lovers and collectors.

She has been commissioned by the leading Designers Kit Kemp and Johnny Bowden working in collaboration with a wide range of brands including Burberry, Paul Smith and Anthropologie.

She was awarded the National Open Art Competition Painting Prize in 2012 chosen by Grayson Perry and regularly exhibits at the Royal Academy.

She exhibits regularly both in the United Kingdom and the USA and commissions include those from the Duchess of Northumberland, designer Betty Jackson, comedians Russell Howard and Ricky Gervais and actor Russell Tovey.



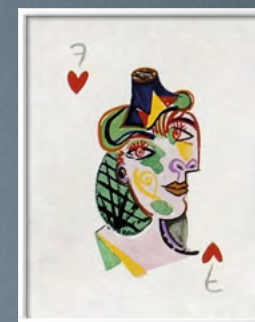
**FAE: GL563**

(Paper Size 8 x 10 in | 20 x 25 cm)



**FAE: GL564**

(Paper Size 8 x 10 in | 20 x 25 cm)



**FAE: GL565**

(Paper Size 8 x 10 in | 20 x 25 cm)



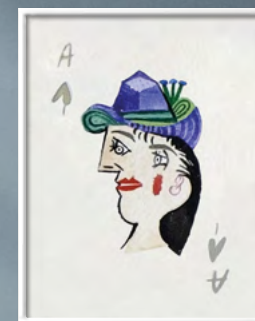
**FAE: GL566**

(Paper Size 8 x 10 in | 20 x 25 cm)



**FAE: GL567**

(Paper Size 8 x 10 in | 20 x 25 cm)

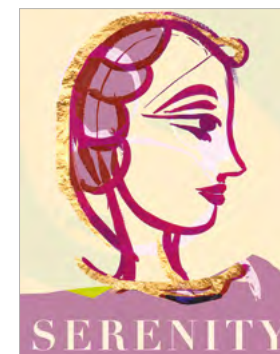


**FAE: GL568**

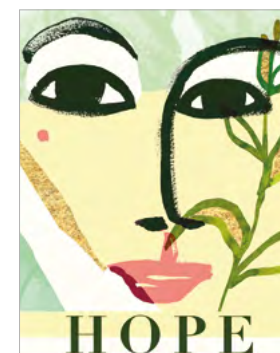
(Paper Size 8 x 10 in | 20 x 25 cm)



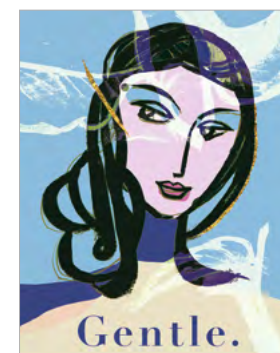
**GCL: RH3463**  
(Ratio 4:5)



**GCL: RH3464** (Ratio 4:5)



**GCL: RH3462** (Ratio 4:5)



**GCL: RH3461** (Ratio 4:5)

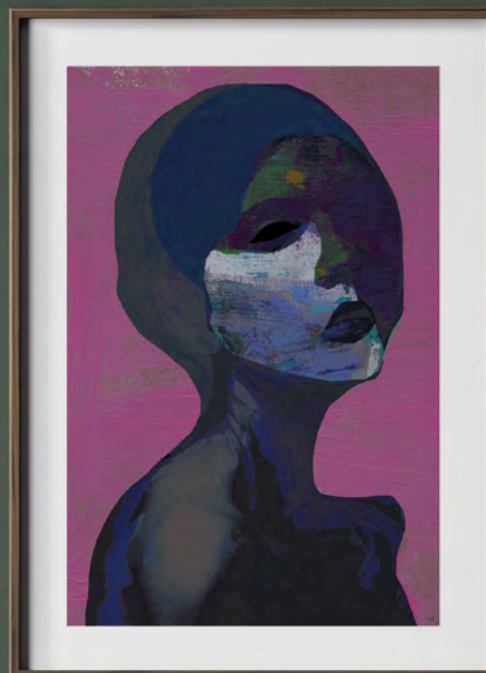




**GCL: XT47133** (Ratio 3:4)



**GCL: XT47132** (Ratio 3:4)



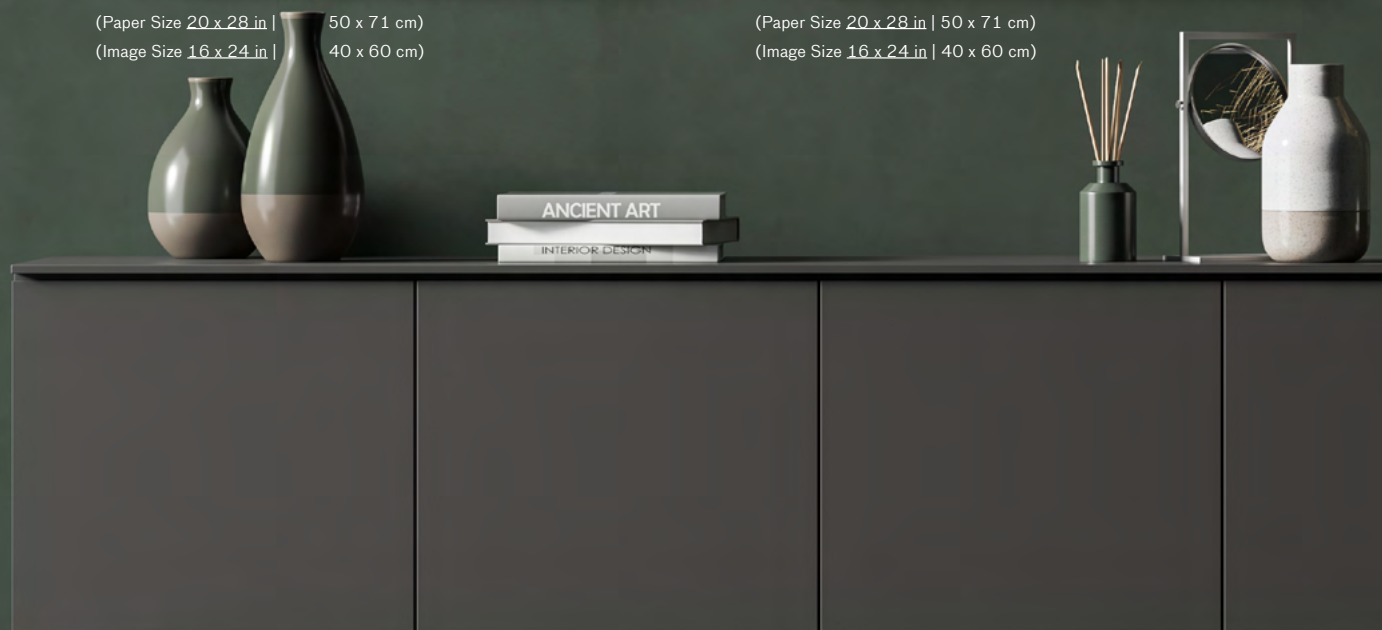
**FAE: GL529**

(Paper Size 20 x 28 in | 50 x 71 cm)  
(Image Size 16 x 24 in | 40 x 60 cm)



**FAE: GL530**

(Paper Size 20 x 28 in | 50 x 71 cm)  
(Image Size 16 x 24 in | 40 x 60 cm)







**GCL: RT46881** (Ratio 3:4)



**GCL: RT46880** (Ratio 3:4)



**GCL: RT46882** (Ratio 3:4)



**GCL: RT46883** (Ratio 3:4)







**OE: SPG1921**  
(Paper Size 12 x 16 in | 30 x 40 cm)  
**GCL: RT46566** (Ratio 3:4)



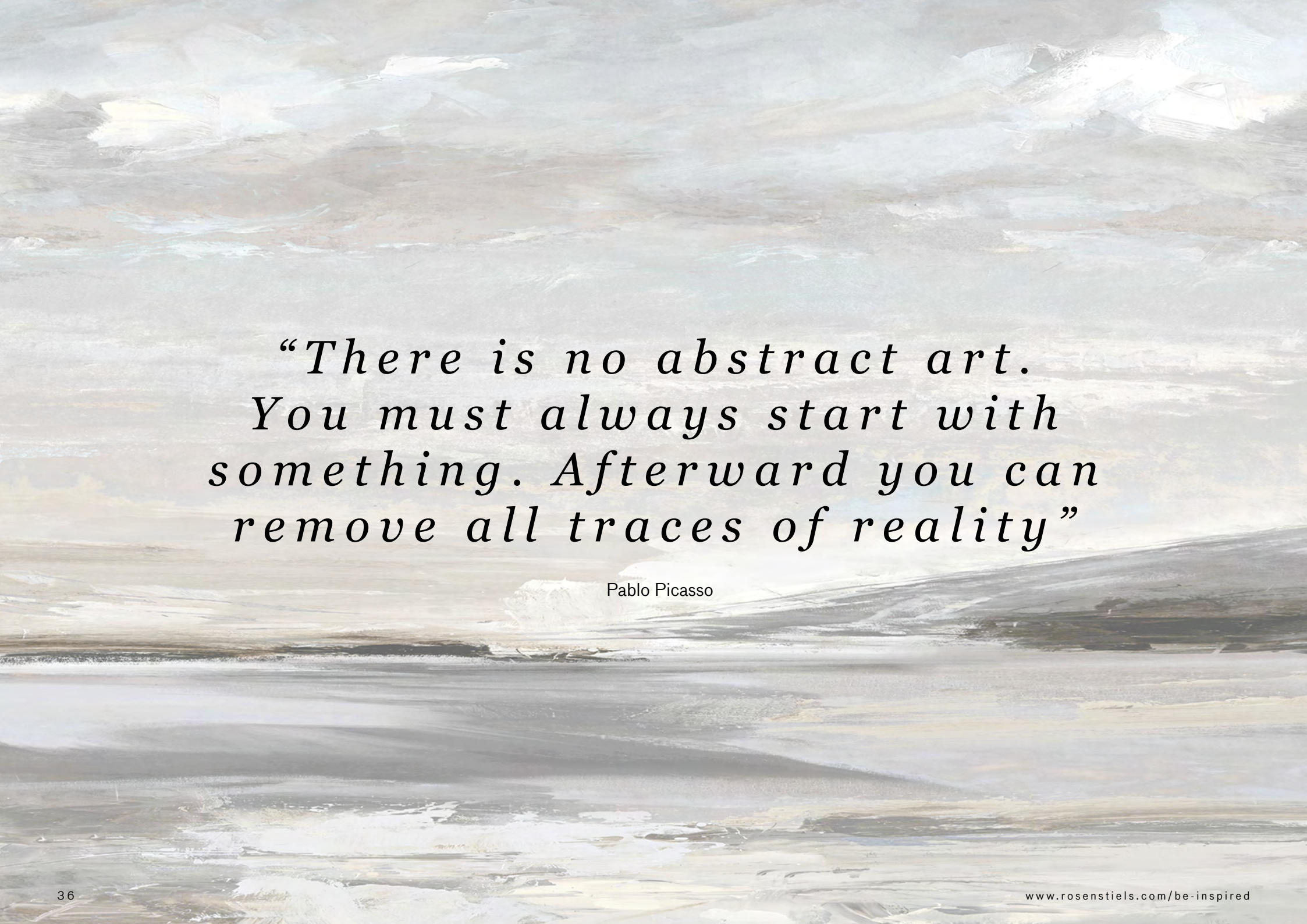
**OE: SPG1922**  
(Paper Size 12 x 16 in | 30 x 40 cm)  
**GCL: RT46567** (Ratio 3:4)



**OE: SPG1919**  
(Paper Size 12 x 16 in | 30 x 40 cm)  
**GCL: RT46564** (Ratio 3:4)

**OE: SPG1920**  
(Paper Size 12 x 16 in | 30 x 40 cm)  
**GCL: RT46565** (Ratio 3:4)





*“There is no abstract art.  
You must always start with  
something. Afterward you can  
remove all traces of reality”*

Pablo Picasso





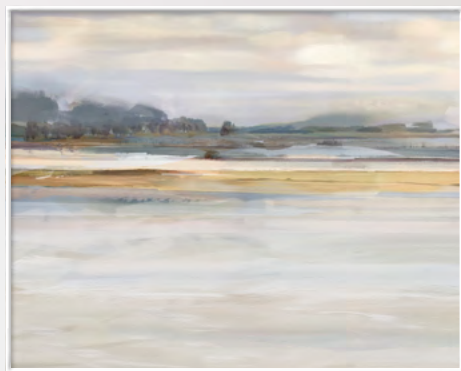
**GCL: RT46748** (Ratio 4:3)







**GCL: XH3250** (Ratio 5:4)



**GCL: XH3251** (Ratio 4:5)







**GCL: XT45013** (Ratio 4:3)

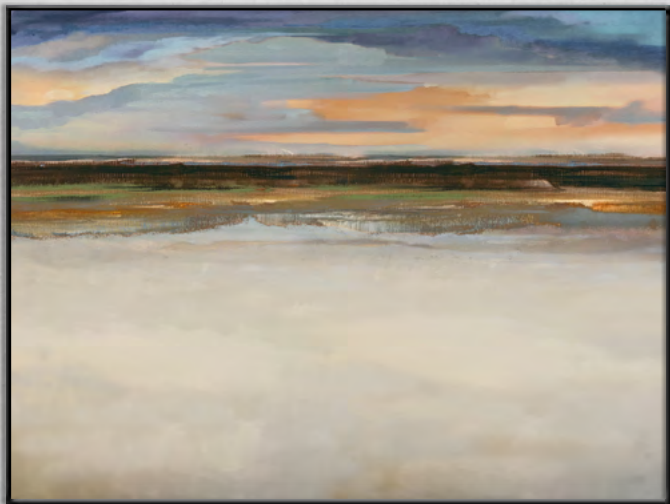


**GCL: XX86655** (Ratio 3:2)

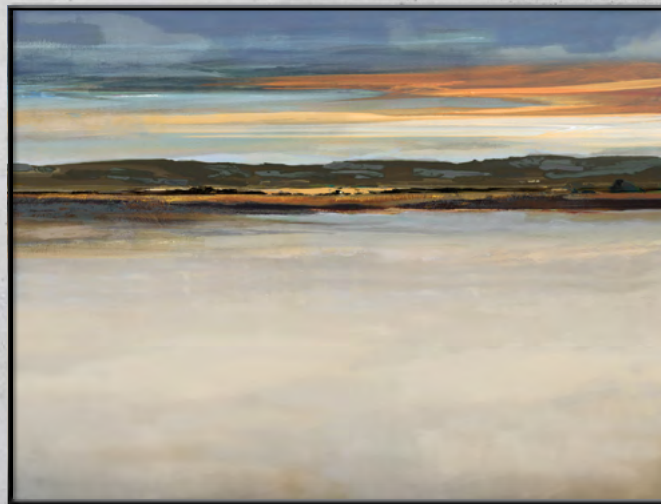


**GCL: XC51860** (Ratio 3:1)





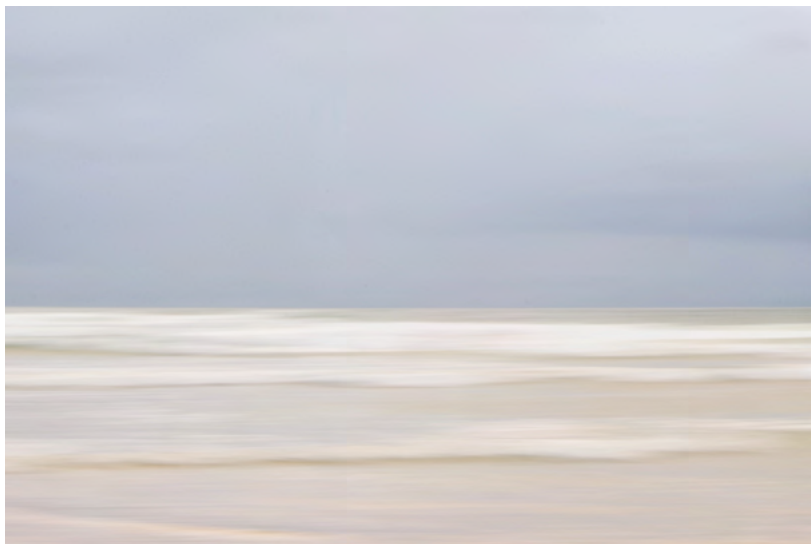
**GCL: XT46578** (Ratio 4:3)



**GCL: XT46579** (Ratio 4:3)



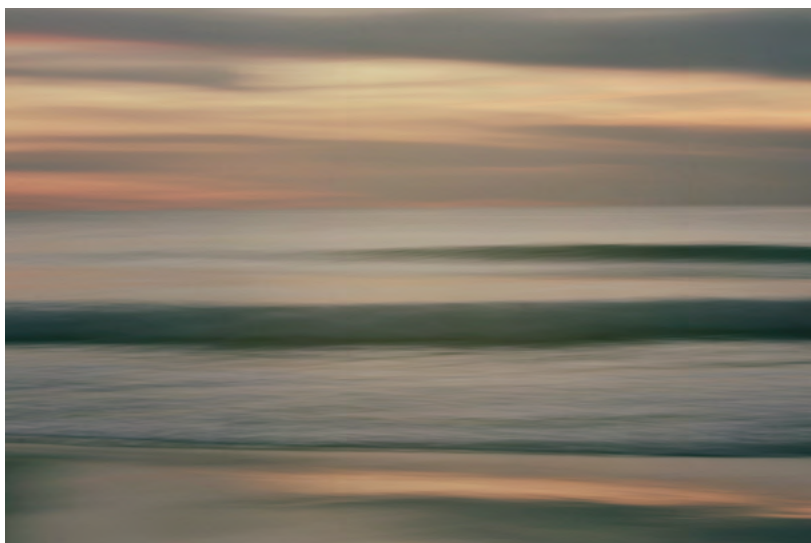




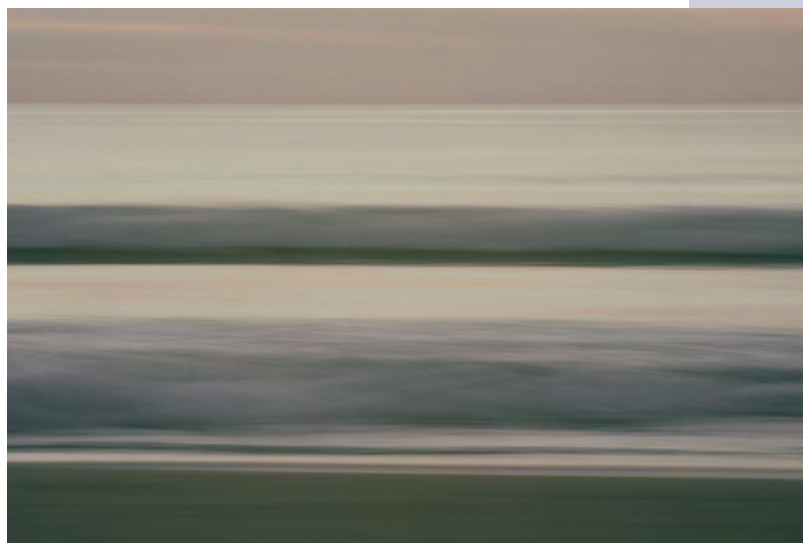
**GCL: RX87041** (Ratio 3:2)



**GCL: RX87040** (Ratio 3:2)



**GCL: RX87039** (Ratio 3:2)



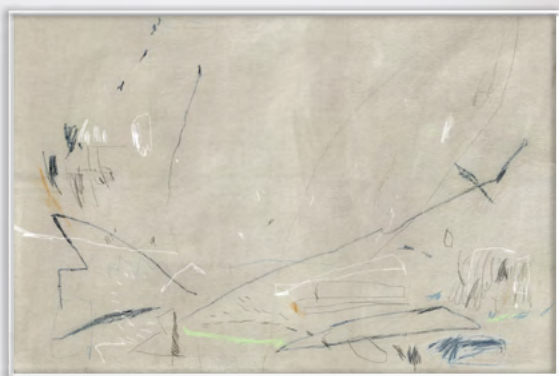
**GCL: RX87038** (Ratio 3:2)





**OE: DXQ10883**

(Paper Size 60 x 40 in | 150 x 100 cm)



**OE: DXQ10882**

(Paper Size 60 x 40 in | 150 x 100 cm)



### *Design Tip*

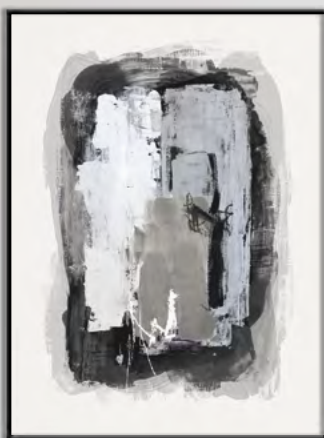
Many abstracts can work any which way you wish to hang them, so why not get creative!







**GCL: XT47089** (Ratio 3:4)



**GCL: XT47091** (Ratio 3:4)



**GCL: XT47093** (Ratio 3:4)



**GCL: XT47096** (Ratio 3:4)







**GCL: XT47090** (Ratio 3:4)



**GCL: XT47095** (Ratio 3:4)



**GCL: XW72013** (Ratio 2:1)



**GCL: XT47121** (Ratio 3:4)





**GCL: XT47094** (Ratio 3:4)



**GCL: XT47092** (Ratio 3:4)

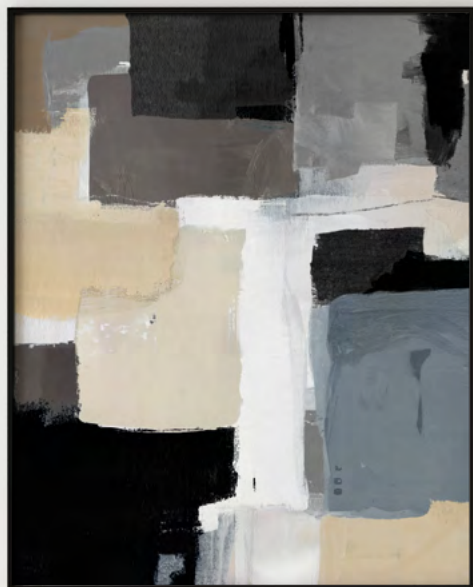


**GCL: RH3558** (Ratio 4:5)



**GCL: RH3557** (Ratio 4:5)





**GCL: XH3488** (Ratio 4:5)

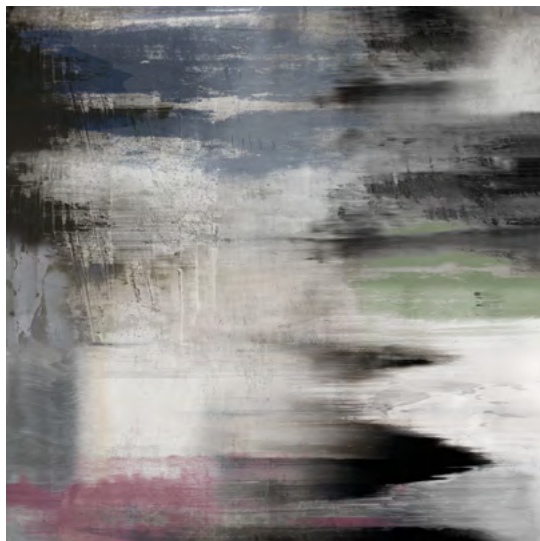


**GCL: XH3489** (Ratio 4:5)

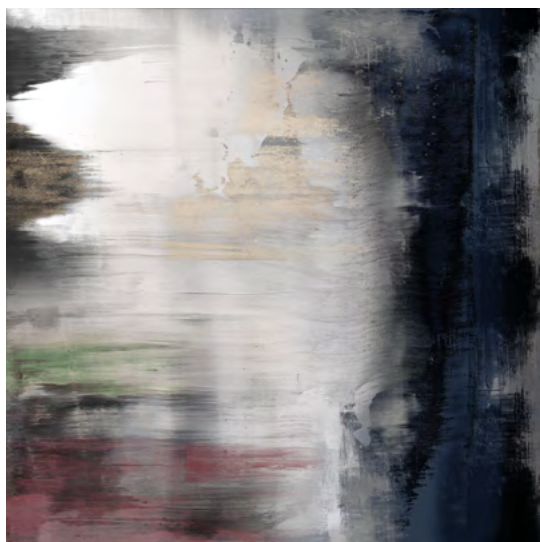


*Please click  
on images to  
link to our website  
for further  
information*





**GCL: XL25879** (Ratio 1:1)



**GCL: XL25880** (Ratio 1:1)



**GCL: XT47127** (Ratio 3:4)

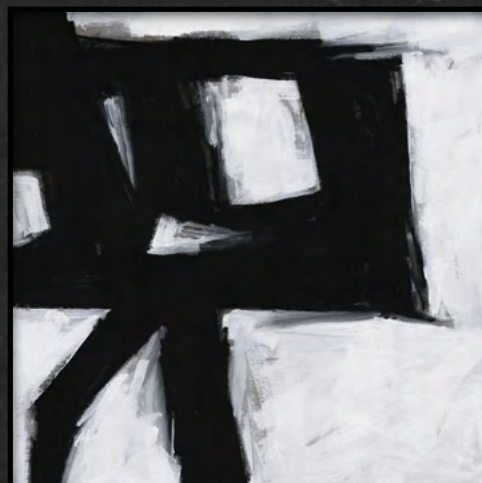


**GCL: XT47128** (Ratio 3:4)





**GCL: RL25783** (Ratio 1:1)



**GCL: RL25780** (Ratio 1:1)



**GCL: RL25781** (Ratio 1:1)



**GCL: RL25782** (Ratio 1:1)





**GCL: RT46628** (Ratio 3:4)



**GCL: RT46629** (Ratio 3:4)



**GCL: RT46630** (Ratio 3:4)



**GCL: RT46631** (Ratio 3:4)







**GCL: XW71817** (Ratio 1:2)

**GCL: XW71818** (Ratio 1:2)

**GCL: XW71819** (Ratio 1:2)



**GCL: RL25356** (Ratio 1:1)



**GCL: RL25357** (Ratio 1:1)



**GCL: RL25358** (Ratio 1:1)

**GCL: RL25359** (Ratio 1:1)







BE INSPIRED  
*Abstraction*



*Further inspiration*

33-35 Markham Street, Chelsea, London, SW3 3NR, England +44 (0)20 7352 3551  
sales@rosenstiels.com www.rosenstiels.com © Felix Rosenstiel's Widow & Son Ltd.

ROSENSTIELS  
LONDON — 1880